

# **WELDCRAFT** TIG TORCHES

WELDCRAFT's innovative "WP" silicone rubber insulated TIG welding torches have become the recognized world leader for quality, durability and value. They have earned the respect of the most demanding industries; aircraft/aerospace, power plant construction, shipbuilding and pipe fabrication. Construction sites, production plants, job shops, military facilities, schools and research laboratories around the world rely on WELDCRAFT to meet their welding torch needs day in and day out.

## **Quality workmanship, Innovative design, Finest materials**

### **1. High-Dielectric Silicone Rubber Insulation**

A resilient, high-temperature silicone rubber insulation covers Weldcraft TIG Torches. The high-dielectric qualities of this material prevent leakage of high frequency current which causes "arcing out" of the torch head, a common occurrence of phenolic insulation.

This silicone rubber insulation is tough and durable. It is not susceptible to chipping and cracking and will withstand temperatures as high as 500°F. The high-strength compound provides an excellent rubber-to-metal bond.

### **2. Heavy Copper Construction**

Designed to carry electric current and dissipate heat most efficiently, the basic construction parts of Weldcraft TIG Torches are made of high-conductive copper and silver brazed together. This allows greater current capacities, cool operation and longer trouble-free performance.

### **3. Ample Cooling Capacity**

You'll find extra-large internal water chambers in Weldcraft water-cooled torches to meet continuous performance requirements.

### **4. Wide Selection of Accessories**

Each torch has a large selection of collets, collet bodies and gas lens collet bodies to handle a variety of applications. A complete selection of ceramic, long ceramic and alumina nozzles is also available for each model.

### **5. Special Teflon® Cup Gasket and Insert**

A special teflon cup gasket provides a positive gas seal for the gas nozzle. The gasket is easily replaceable if worn or damaged. A similar teflon insert is molded into the back end of the torch body to ensure a positive gas seal with the back cap. Both of these seals also provide excellent insulation against high frequency current leakage at these points.

### **6. Quick-Release Tungsten Adjustment**

Most torches have a quick-release tungsten adjustment feature. A quarter turn of the back cap releases the tungsten electrode for adjustment or removal. Several back caps are available for a variety of working conditions.

### **7. Flexible Hoses**

All service lines for Weldcraft TIG Torches — water and gas hoses, power cables — are made from the finest quality high-temperature vinyl or rubber tubing available. This ensures exceptional flexibility and long life under severe operating conditions.

### **8. Fingertip Gas Control**

All air-cooled Weldcraft Torches have a convenient gas control valve **on the torch** so the operator can quickly and easily control the flow of shielding gas.

### **9. Heavy-Duty Power Cable Assembly**

All Weldcraft air-cooled torches are available with an optional two-piece power cable and gas hose assembly. This makes it possible to use a larger conductor for the power cable and simplifies repair or replacement of the gas hose. Ideal for field welding application.

QUICK-RELEASE  
TUNGSTEN ADJUSTMENT

TEFLON  
GASKETS

SILICONE  
RUBBER  
INSULATION

FLEXIBLE  
HOSES

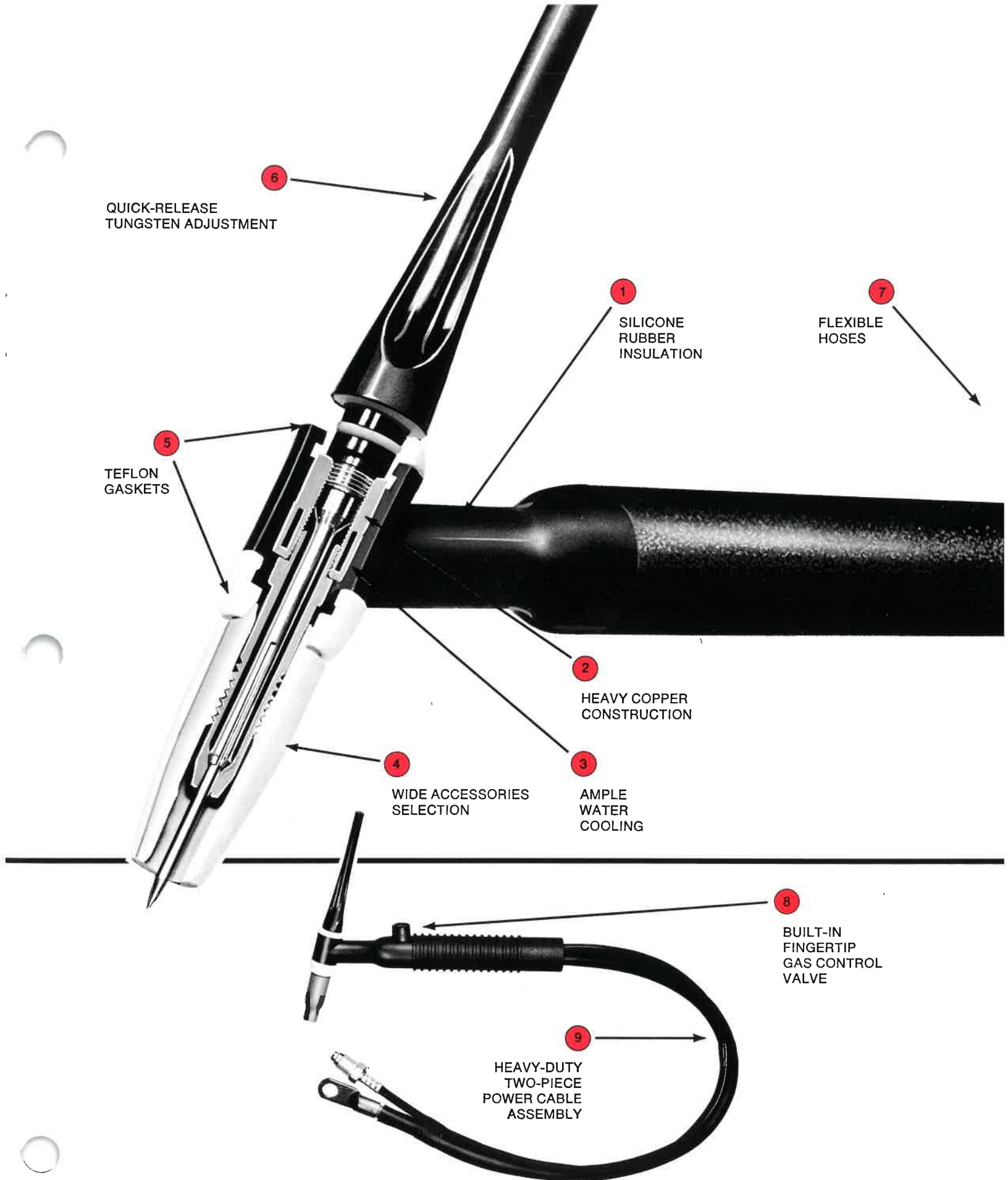
HEAVY COPPER  
CONSTRUCTION

WIDE ACCESSORIES  
SELECTION

AMPLE  
WATER  
COOLING

BUILT-IN  
FINGERTIP  
GAS CONTROL  
VALVE

HEAVY-DUTY  
TWO-PIECE  
POWER CABLE  
ASSEMBLY



## WP-50 (50 AMPS)



### SPECIFICATIONS

Capacity (Max) (dcsp)	50 amps
Weight (less power cable)	1 oz.
Torch Length	8½"
Handle Diameter	¾"

## SMALLEST TIG TORCH IN THE WORLD

Miniature torch head is only ⅝" in length and ⅜" in diameter.

Optional 180° head.

WP-50V has built-in gas control valve.

Patented.

## ORDERING INFORMATION

<b>Torch Body</b>	<b>WP-50</b>	<b>WP-50V</b>
<b>Torch Package:</b> torch body, handle, 12½' power cable**	<b>WP-50-12</b>	<b>WP-50V-12</b>
<b>Torch Package:</b> torch body, handle, 25' power cable**	<b>WP-50-25</b>	<b>WP-50V-25</b>

\*\*Power cable adapter must be ordered separately. Optional 180° head available. Part no. 50B180.

ORDER ACCESSORY KIT AK-6

## WP-24 (80 AMPS)



### SPECIFICATIONS

Capacity (Max) (ac, dcsp)	80 amps
Weight (less power cable)	1 oz.
Torch Length	7½"
Handle Diameter	¾"

## SMALL, LIGHTWEIGHT TORCH

Ideal for intricate work. Reaches into tight places. Handle mounted gas control valve available. Feather weight but well balanced and durable.

Parts interchange with WP-24W Model.

\*Torch body head angle is available either 60° or 90°. 60° angle is standard.

## ORDERING INFORMATION

<b>Torch Body,*</b> with insulating gasket	<b>WP-24</b>
<b>Torch Package:</b> torch body, handle, 12½' power cable**	<b>WP-24-12</b>
<b>Above Package,</b> with V-2 gas valve	<b>WP-24-12V</b>
<b>Torch Package:</b> torch body, handle, 25' power cable**	<b>WP-24-25</b>
<b>Above Package,</b> with V-2 gas valve.	<b>WP-24-25V</b>

\*\*Power cable adapter must be ordered separately.

ORDER ACCESSORY KIT AK-5

## WP-9, WP-9V (125 AMPS)



## WP-9P (125 AMPS)



### SPECIFICATIONS

Capacity (Max) (ac, dcsp)	125 amps
Weight (less power cable)	3 oz.
Torch Length	WP-9: 7", WP-9P: 6½"
Handle Diameter	¾"

## VERSATILE, LIGHTWEIGHT FOR THIN GAUGE MATERIALS

Quick-release tungsten adjustment. Optional 2 pc. power cable assembly on WP-9, 9P.

2 pc. power cable and ribbed handle are standard on WP-9V torch packages.

Parts interchange with WP-20, WP-20P and WP-25 Models.

## ORDERING INFORMATION

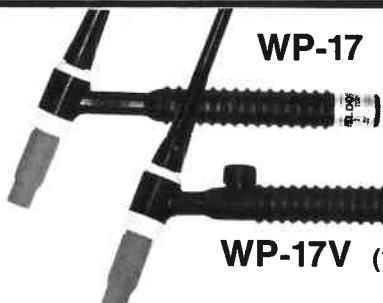
<b>Torch Body,</b> with cup gasket.	<b>WP-9</b>	<b>WP-9P</b>
<b>Torch Package:</b> torch body, handle, medium back cap,* 12½' power cable**	<b>WP-9-12</b>	<b>WP-9P-12</b>
<b>Above Package,</b> with gas valve	<b>WP-9V-12</b>	<b>WP-9P-12V</b>
<b>Torch Package:</b> torch body, handle, medium back cap,* 25' power cable	<b>WP-9-25</b>	<b>WP-9P-25</b>
<b>Above Package,</b> with gas valve	<b>WP-9V-25</b>	<b>WP-9P-25V</b>

\*WP-9P torch does not use back caps.

\*\*Power cable adapter must be ordered separately. Two-piece power cable assembly optional; specify if desired. Power cable adapter not needed with two-piece power cable.

ORDER ACCESSORY KIT WP-9,9V, AK-1, WP-9P AK-1A

## WP-17 (150 AMPS)



## WP-17V (150 AMPS)

### SPECIFICATIONS

Capacity (Max) (ac, dcsp)	150 amps
Weight (less power cable)	6 oz.
Torch Length	7¾"
Handle Diameter	7/8"

## HIGH CAPACITY FOR THIN TO MEDIUM GAUGE MATERIALS

Compact and durable for field welding applications. Ribbed handle for comfort and cool operation. Finger-tip gas control valve on WP-17V model and heavy duty 2 pc. power cable is supplied as standard equipment.

Parts interchange with WP-18, WP-26 and WP-26V Models.

## ORDERING INFORMATION

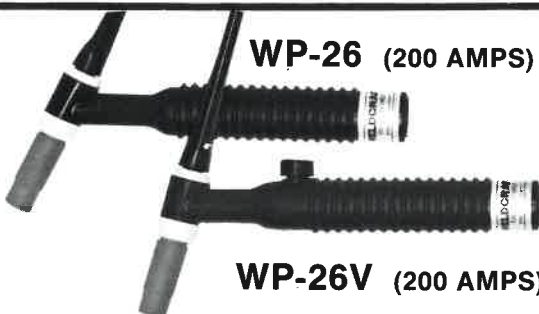
<b>Torch Body,</b> with cup gasket	<b>WP-17</b>	<b>WP-17V</b>
<b>Torch Package:</b> torch body, long back cap, handle, 12½' power cable*	<b>WP-17-12</b>	<b>WP-17V-12</b>
<b>Torch Package:</b> torch body, long back cap, handle, 25' power cable*	<b>WP-17-25</b>	<b>WP-17V-25</b>

\*Two-piece power cable assembly is standard equipment on WP-17 and WP-17V torch packages.

Power cable adapter is not needed with two-piece power cable. Conventional one-piece power cable is optional; specify if desired.

ORDER ACCESSORY KIT AK-2

## WP-26 (200 AMPS)



## WP-26V (200 AMPS)

### SPECIFICATIONS

Capacity (Max) (ac, dcsp)	200 amps
Weight (less power cable)	10 oz.
Torch Length	8½"
Handle Diameter	1¼"

## MAXIMUM CAPACITY AIR COOLED TORCH FOR CONTINUOUS HEAVY-DUTY USE.

Heavy copper construction for rugged field work. Heavy duty 2 pc. power cable and ribbed handle are standard equipment.

Parts interchange with WP-18, WP-17 and WP-17V Models.

## ORDERING INFORMATION

<b>Torch Body,</b> with cup gasket	<b>WP-26</b>	<b>WP-26V</b>
<b>Torch Package:</b> torch body, long back cap, handle, 12½' power cable*	<b>WP-26-12</b>	<b>WP-26V-12</b>
<b>Torch Package:</b> torch body, long back cap, handle, 25' power cable*	<b>WP-26-25</b>	<b>WP-26V-25</b>

\*Two-piece power cable is standard equipment on WP-26 and WP-26V torch packages. Power cable adapter is not needed. Conventional one-piece power cable is optional; specify if desired.

ORDER ACCESSORY KIT AK-3

## ORDERING INFORMATION

<b>Torch Body</b> , with insulating gasket	<b>WP-24W</b>
<b>Torch Package:</b> torch body, handle, 12½' power cable & hoses.*	<b>WP-24W-12</b>
<b>Torch Package:</b> torch body, handle, 25' power cable & hoses.*	<b>WP-24W-25</b>

\*Power cable adapter must be ordered separately.

ORDER ACCESSORY KIT AK-5W

## SMALLEST WATER-COOLED TORCH MADE

Ideal for cramped locations. Fits through narrow openings—yet excellent capacity. Extremely light and well balanced.

Parts interchange with WP-24 Model.

## WP-24W (180 AMPS)



### SPECIFICATIONS

Capacity (Max) (ac, dcsp)	180 amps
Weight (less hoses)	3 oz.
Torch Length	7½"
Handle Diameter	¾"

## ORDERING INFORMATION

<b>Torch Body</b> , with cup gasket	<b>WP-25</b>
<b>Torch Package:</b> torch body, handle, 12½' power cable & hoses.*	<b>WP-25-12</b>
<b>Torch Package:</b> torch body, handle, 25' power cable & hoses.*	<b>WP-25-25</b>

\*Power cable adapter must be ordered separately.

ORDER ACCESSORY KIT AK-4A

## SMALL, LIGHTWEIGHT FLEXIBLE HEAD TORCH

The head can be bent to any angle for access to difficult joints. Water cooling down to tip for efficient operation and long trouble-free service.

Parts interchange with WP-9, WP-9P, WP-20 and WP-20P Models.

## WP-25 (200 AMPS)



### SPECIFICATIONS

Capacity (Max) (ac, dcsp)	200 amps
Weight (less hoses)	4 oz.
Torch Length	11"
Handle Diameter	¾"

## ORDERING INFORMATION

<b>Torch Body</b> , with cup gasket	<b>WP-20</b>	<b>WP-20P</b>
<b>Torch Package:</b> torch body, medium back cap,* handle, 12½' power cable & hoses.**	<b>WP-20-12</b>	<b>WP-20P-12</b>
<b>Torch Package:</b> torch body, medium back cap,* handle, 25' power cable hoses.**	<b>WP-20-25</b>	<b>WP-20P-25</b>

\*WP-20P torch does not use back caps.

\*\*Power cable adapter must be ordered separately.

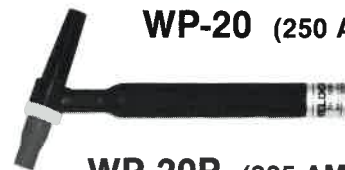
ORDER ACCESSORY KIT WP-20 AK-4  
WP-20P, AK-4A

## LIGHTWEIGHT, SMALL DURABLE TORCHES

Compact and well-balanced for general duty use. Efficient around-the-head cooling for trouble free performance and long life.

Parts interchange with WP-9, WP-9P and WP-25 Models.

## WP-20 (250 AMPS)



## WP-20P (225 AMPS)



### SPECIFICATIONS

Capacity (Max) (ac, dcsp)	250 amps
Weight (less hoses)	3 oz.
Torch Length	WP-20: 7", WP-20P: 6½"
Handle Diameter	¾"

## ORDERING INFORMATION

<b>Torch Body</b> , with cup gasket	<b>WP-18</b>	<b>WP-18P</b>
<b>Torch Package:</b> torch body, long back cap, handle, 12½' power cable & hoses.*	<b>WP-18-12</b>	
<b>Torch Package:</b> torch body, long back cap, 25' power cable & hoses.*	<b>WP-18-25</b>	
<b>Torch Package:</b> torch body, barrel 12½' power cable & hoses.*		<b>WP-18P-12</b>
<b>Torch Package:</b> torch body, barrel 25' power cable & hoses.*		<b>WP-18P-25</b>

\*Power cable adapter must be ordered separately.

ORDER ACCESSORY KIT AK-3  
WP-18P Order Individual Accessories

## WORK HORSE TORCHES FOR CONTINUOUS DUTY

WP-18: Heavy-duty rugged production torch for continuous duty to 350 amps.

WP-18P: Machine torch for a variety of mechanized applications.

Parts interchange with WP-17, WP-17V, WP-26 and WP-26V Torch Models.

WP-18V model available with built-in fingertip gas control valve.

## WP-18 (350 AMPS)



## WP-18P



### SPECIFICATIONS

Capacity (Max)	WP-18: 350 (ac, dcsp), WP-18P: (500 dcsp) (350 ac)
Weight (less hoses)	WP-18: 7 oz., WP-18P: 12½"
Torch Length	WP-18: 9¼", WP-18P: 13½" x 10"
Handle diameter	WP-18: 1½", WP-18P: 1½" x 10"
Rack	24 or 32 pitch, ¼" x ¼" x 8"

## ORDERING INFORMATION

<b>Torch Body</b> , with nozzle gasket	<b>WP-12</b>
<b>Torch Package:</b> torch body, long back cap, handle, 12½' hose & power cable assy. in rubber sheath*	<b>WP-12-12</b>
<b>Torch Package:</b> torch body, long back cap, handle, 25' hose & power cable assy. in rubber sheath*	<b>WP-12-25</b>

\*Power cable adapter must be ordered separately.

ORDER ACCESSORY KIT AK-7

## TOTALLY SEALED WATER CHAMBER WITH HEAVY DUTY COMPONENTS

A truly heavy duty performer with a unique water cooling design. Heavy duty collets, collet bodies and gas lens.

Patent pending.

## WP-12 (500 AMPS)



### SPECIFICATIONS

Capacity (Max) (ac, dcsp)	500 amps
Weight (less hose & cable assy)	15 oz.
Torch Length	11½"
Handle diameter	1½"
Cooling requirements	1.5 qt. per min.

\*Water cooled torches require cooling water flow of one quart per minute at a maximum of 50 PSI pressure.



## ALUMINA AND LAVA NOZZLES

**Alumina Nozzles**, made from high strength alumina materials, have very good electrical insulating properties; exceptionally high impact resistance, heat resistance and thermal conductivity; and resist splatter build-up. They are recommended for most welding operations except for use in confined areas.

**Lava Nozzles**, made from Grade "A" lava materials, are less shock- and heat-resistant than alumina nozzles but will give good service for general applications. They also perform well in confined areas where excessive heat is reflected back into the nozzle. Care must be taken in handling the more fragile Lava nozzles.

### ALUMINA NOZZLES

TORCH	LENGTH	PART NO.	SIZE	ORIFICE
WP-17, 17V, 18, 18V, 18P, 26, 26V	1-27/32"	10N50	4	1/4" 6
		10N49	5	5/16" 8
		10N48	6	3/8" 10
		10N47	7	7/16" 11
		10N46	8	1/2" 12.5
		10N45	10	5/8" 16
		10N44	12	3/4" 19
WP-9, 9P, 9V, 20, 20P, 25	1-5/32"	13N08	4	1/4" 6
		13N09	5	5/16" 8
		13N10	6	3/8" 10
		13N11	7	7/16" 11
		13N12	8	1/2" 12.5
		13N13	10	5/8" 16
WP-12	1-1/4"	14N57	4	1/4" 6
		14N58	5	5/16" 8
		14N59	6	3/8" 10
		14N60	7	7/16" 11
		14N61	8	1/2" 12.5
		14N61-10	10	5/8" 16
		14N61-12	12	3/4" 19
WP-24, 24W	5/8"	A53N24	4	1/4" 6
		A53N25	5	5/16" 8
		A53N27	6	3/8" 10

### LAVA NOZZLES

TORCH	LENGTH	PART NO.	SIZE	ORIFICE
WP-17, 17V, 18, 18V, 18P, 26, 26V	1-27/32"	105Z43	4	1/4" 6
		105Z42	5	5/16" 8
		105Z44	6	3/8" 10
		105Z45	7	7/16" 11
		08N78	8	1/2" 12.5
		08N79	10	5/8" 16
		08N80	12	3/4" 19
WP-9, 9P, 9V, 20, 20P, 25	1-5/32"	13N14	4	1/4" 6
		13N15	5	5/16" 8
		13N16	6	3/8" 10
		13N17	7	7/16" 11
		13N18	8	1/2" 12.5
		13N19	10	5/8" 16
WP-24, 24W	5/8"	53N23	.165	.165 4
		53N24	4	1/4" 6
		53N25	5	5/16" 8
	1-1/8"	53N27	6	3/8" 10
		53N28	4L	1/4" 6
		53N26	6L	3/8" 10
WP-50, 50V	3/8"	50N03	3	3/16" 4
		50N04	4	1/4" 6

### LONG ALUMINA NOZZLES

WP-17, 17V, 18, 18P, 18V, 26, 26V	3"	10N49L	5L	5/16" 8
		10N48L	6L	3/8" 10
		10N47L	7L	7/16" 11
GAS LENS	3"	54N17L	5L	5/16" 8
		54N16L	6L	3/8" 10
		54N15L	7L	7/16" 11
WP-12	2-5/8"	14N68	4L	1/4" 6
		14N69	5L	5/16" 8
		14N70	6L	3/8" 10
		14N71	7L	7/16" 11
		14N72	8L	1/2" 12.5

### LONG LAVA NOZZLES

WP-17, 17V, 18, 18V, 18P, 26, 26V	3-7/32"	12N03	4L	1/4" 6
		105Z60	5L	5/16" 8
		12N02	6L	3/8" 10
		105Z61	7L	7/16" 11
WP-9, 9P, 9V, 20, 20P, 25	1-7/8"	796F70	3L	3/16" 4
		796F71	4L	1/4" 6
		796F72	5L	5/16" 8
		796F73	6L	3/8" 10
WP-9, 9P, 9V, 20, 20P, 25	2-1/2"	796F74	3XL	3/16" 4
		796F75	4XL	1/4" 6
		796F76	5XL	5/16" 8
		796F77	6XL	3/8" 10

### ALUMINA GAS LENS NOZZLES (ALSO ORDER INSULATOR)

WP-17, 17V, 18, 18V, 18P, 26, 26V	1-5/8"	54N18	4	1/4" 6
		54N17	5	5/16" 8
		54N16	6	3/8" 10
		54N15	7	7/16" 11
		54N14	8	1/2" 12.5
		54N19	Short	11/16" 17
WP-9, 9P, 9V, 20, 20P, 24, 25	1"	53N58	4	1/4" 6
		53N59	5	5/16" 8
		53N60	6	3/8" 10
		53N61	7	7/16" 11
WP-17, 17V, 18, 18P, 18V, 26, 26V, 12 LARGE DIA. GAS LENS	1-7/8"	57N75	6	3/8" 10
		57N74	8	1/2" 12.5
		53N88	10	5/8" 16
		53N87	12	3/4" 19
		53N89	Short	15/16" 24

### METAL NOZZLES\*

WP-12	1-25/32"	86Z01	6	3/8" 10
		86Z02	8	1/2" 12.5
		86Z03	10	5/8" 16
		86Z06	12	3/4" 19






\*Requires insulating sleeve 85Z99 and metal nozzle gasket 12MNG.

**Notes:** Lava, alumina & metal nozzles are packed 10 nozzles per box. The nozzle number indicates the orifice (I.D. of the outlet end) in 1/16ths of an inch. No. 4 = 1/4" I.D., etc.





## ACCESSORIES • SPARE PARTS

Accessories, such as collets, collet bodies, different length back caps, gas lens collet bodies and nozzles, must be ordered to complete the torch package. These accessories may be ordered in convenient accessory kits, listed on the back, or can be ordered separately as needed.

### COLLETS

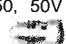
TORCH	PART NO.	SIZE	
		IN	mm
WP-9, 9P, 9V, 20, 20P, 25 	13N20	.020	0,5
	13N21	.040	1,0
	13N22	1/16	1,6
	13N23	3/32	2,4
	13N24	1/8	3,2
WP-17, 17V, 18, 18P, 18V, 26, 26V 	10N21	.020	0,5
	10N22	.040	1,0
	10N23	1/16	1,6
	10N24	3/32	2,4
	10N25	1/8	3,2
	54N20	5/32	4,0
WP-24, 24W 	53N15	.020	0,5
	53N16	.040	1,0
	53N14	1/16	1,6
	24C332	3/32	2,4
FOR GAS LENS 	53N62	.020	0,5
	53N63	.040	1,0
	53N64	1/16	1,6
	24GLC332	3/32	2,4
WP-12 	85Z14	1/16	1,6
	85Z15	3/32	2,4
	85Z16	1/8	3,2
	85Z17	5/32	4,0
	85Z18	3/16	4,8
	85Z19	1/4	6,4

### COLLET BODIES

TORCH	PART NO.	SIZE	
		IN	mm
WP-9, 9P, 9V, 20, 20P, 25 	13N25	.020	0,5
	13N26	.040	1,0
	13N27	1/16	1,6
	13N28	3/32	2,4
	13N29	1/8	3,2
WP-17, 17V, 18, 18P, 18V, 26, 26V 	10N29	.020	0,5
	10N30	.040	1,0
	10N31	1/16	1,6
	10N32	3/32	2,4
	10N28	1/8	3,2
	406488	5/32	4,0
WP-24, 24W* 	53N17	.020	0,5
	53N18	.040	1,0
	53N19	1/16	1,6
	24CB332	3/32	2,4
WP-12 	11WP65	1/16-1/4	1,6-6,4

\*Note: Order wrench (53N20) for WP-24, 24W Collet Body.


### CHUCKS

WP-50, 50V 	50C20	.020	0,5
	50C40	.040	1,0


### STUBBY COLLETS/COLLET BODIES

The stubby collet system allows use of a smaller nozzle reducing the overall torch head length giving access to confined areas, many times eliminating the need and cost of changing to a smaller torch.

### STUBBY COLLETS




TORCH	PART NO.	SIZE	
		IN	mm
WP-17, 17V, 18, 18V, 18P, 26, 26V 	10N22S	.040	1,0
	10N23S	1/16	1,6
	10N24S	3/32	2,4
	10N25S	1/8	3,2

### STUBBY COLLET BODY (Also order insulator)

WP-17, 17V, 18, 18V, 18P, 26, 26V 	17CB20	ALL
--	--------	-----

## GAS LENS COLLET BODIES (Also order insulator)

The gas lens virtually eliminates turbulence in the gas shielding stream as it emerges from the nozzle. The result is better shielding patterns; also the long stable stream allows the electrode to be extended farther beyond the end of the nozzle for improved visibility of the weld zone.

TORCH	PART NO.	SIZE	
		IN	mm
WP-9, 9P, 9V, 20, 20P, 24, 24W, 25 	45V41	.020	0,5
	45V42	.040	1,0
	45V43	1/16	1,6
	45V44	3/32	2,4
	45V45	1/8	3,2
WP-17, 17V, 18, 18P, 18V, 26, 26V 	45V29	.020	0,5
	45V24	.040	1,0
	45V25	1/16	1,6
	45V26	3/32	2,4
	45V27	1/8	3,2
	45V28	5/32	4,0
WP-17, 17V, 18, 18P, 18V, 26, 26V LARGE DIA. GAS LENS	45V0204	.020-.040	0,5-1,0
	45V116	1/16	1,6
	45V64	3/32	2,4
	995795	1/8	3,2
WP-12 	45V63	5/32	4,0
	11GL16	1/16	1,6
	11GL32	3/32	2,4
	11GL18	1/8	3,2
	11GL53	5/32	4,0
	11GL36	3/16	4,8

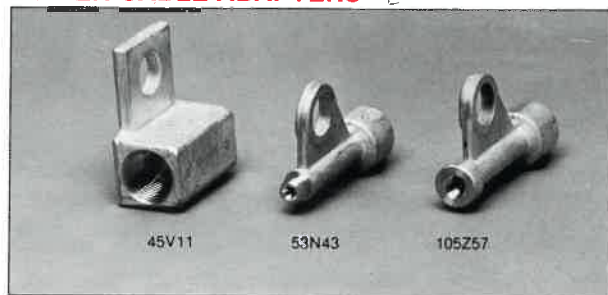
### INSULATORS

TORCH	PART NO.
WP-17, 17V, 18, 18V, 18P, 26, 26V GAS LENS	54N01
LARGE DIAMETER GAS LENS (use on above torches)	54N63
WP9, 9P, 9V, 20, 20P, 25 (supplied on torch body)	598882
WP-24, 24W GAS LENS	53N66
WP-12 GAS LENS	12GLG
STUBBY COLLET BODY	18CG20

### BACK CAPS

TORCH	PART NO.	SIZE
WP-9, 9V, 20	41V33	SHORT
	41V35	MEDIUM
	41V24	LONG
WP-17, 17V, 18, 18V, 26, 26V	57Y02	LONG
	57Y04	SHORT
WP-12	56Y44	LONG
	56Y45	SHORT

### POWER CABLE ADAPTERS



Power cable adapters are not supplied with the torch packages. This avoids cost of duplicate adapters if the new torch is purchased as a replacement. Order adapters separately if needed.

TORCH	ADAPTER
WP-18, 18P, 18V, 20, 20P, 24W, 25, 12	45V11
WP-9, 9P, 9V*, 17*, 17V*, 50, 50V	105Z57
WP-24	53N43
WP-26*, 26V*	45V62

\*Note WP-9V, WP-17, 17V, 26, 26V torch packages are supplied with two piece power cable assembly. Adapters are required with optional one piece power cable assembly only.

### GAS CONTROL VALVE

V-2 Handle-mounted valve for WP-9P and WP-24 air-cooled torches. Replaces standard handle and can be installed on torches already in use. Usable with conventional one-piece power cable or heavy-duty two-piece power cable assembly.



Accessory Kit



Master Accessory Kit



Hook-Up Kit



Extension Kit



Spot Weld Kit

## ACCESSORY KITS

### AK-1 WP-9

- 1 Long Back Cap
- 2 Collets .040", 1/16"
- 2 Collet Bodies .040", 1/16"
- 3 Al. Nozzles 4, 5, 6
- 2 Tungsten Electrodes 2% .040", 1/16" x 7"

### AK-1A WP-9P

- As AK-1 Less Long Back Cap

### AK-2 WP-17, 17V

- 1 Short Back Cap
- 3 Collets .040", 1/16", 3/32"
- 3 Collet Bodies .040", 1/16", 3/32"
- 3 Al. Nozzles 4, 5, 6
- 3 Tungsten Electrodes 2% .040", 1/16", 3/32" x 7"

### AK-3 WP-18, 18V, 26, 26V

- 1 Short Back Cap
- 3 Collets 1/16", 3/32", 1/8"
- 3 Collet Bodies 1/16", 3/32", 1/8"
- 3 Al. Nozzles 5, 6, 8
- 3 Tungsten Electrodes 2% 1/16", 3/32", 1/8" x 7"

### AK-4 WP-20

- 1 Long Back Cap
- 3 Collets 1/16", 3/32", 1/8"
- 3 Collet Bodies 1/16", 3/32", 1/8"
- 3 Al. Nozzles 5, 6, 7
- 3 Tungsten Electrodes 2% 1/16", 3/32", 1/8"

### AK-4A WP-20P, 25

- As AK-4 Less Long Back Cap

### AK-5 WP-24

- 2 Collets .040", 1/16"
- 2 Collet Bodies .040", 1/16"
- 3 La. Nozzles 4, 5, 6
- 1 Collet Body Wrench 1/8", 5/32", 3/16"
- 2 Tungsten Electrodes 2% .040", 1/16" x 7"

### AK-5W WP-24W

- 3 Collets .040", 1/16", 3/32"
- 3 Collet Bodies .040", 1/16", 3/32"
- 3 La. Nozzles 4, 5, 6
- 1 Collet Body Wrench 1/8", 5/32", 3/16"
- 3 Tungsten Electrodes 2% .040", 1/16", 3/32" x 7"

### AK-6 WP-50

- 1 Chuck .040"
- 2 Nozzles 3, 4
- 1 Chuck Wrench
- 1 Tungsten Electrode 2% .040" x 7"

### AK-7 WP-12

- 1 Short Back Cap
- 3 Collets 1/8", 5/32", 3/16"
- 1 Collet Body
- 3 Al. Nozzles 7, 8, 10
- 3 Tungsten Electrodes 2% 1/8", 5/32", 3/16" x 7"

## MASTER ACCESSORY KITS

### MAK-1S: Starter Kit for WP-9, 9P, 20, 20P, 25

- 12 Collets: (2) .040", (4) 1/16", (4) 3/32", (2) 1/8"
  - 7 Collet Bodies: (1) .040", (2) 1/16", (2) 3/32", (2) 1/8"
  - 4 Gas Lenses: (1) .040", (1) 1/16", (1) 3/32", (1) 1/8"
  - 4 Back Caps: (1) short, (2) medium, (1) long
  - 1 Cup Gasket • 4 Back Cap O-Rings
  - 10 Wire Clamps • 1 Parts Box
- Parts Box only — MAK-1

### MAK-2S: Starter Kit for WP-17, 17V, 18, 18P, 18V, 26, 26V

- 10 Collets: (1) .040", (3) 1/16", (3) 3/32", (2) 1/8", (1) 5/32"
  - 8 Collet Bodies: (1) .040", (2) 1/16", (2) 3/32", (2) 1/8", (1) 5/32"
  - 4 Gas Lenses: (1) .040", (1) 1/16", (1) 3/32", (1) 1/8"
  - 2 Back Caps: (1) short, (1) long
  - 2 Cup Gaskets • (1) Gas Lens Insulator
  - 4 Back Cap O-Rings • 1 Parts Box
- Parts Box only — MAK-2

## HOOKE-UP KITS

### Water-Cooled Torches Kit — HK-1

- 1 Power Cable Adapter (45V11)
- 2 Water Hoses, 12-1/2' (40V76)
- 1 Water Hose Coupler (11N18)
- 2 Water Adapter Fittings, 1/4" NPT male to hose.
- 1 Gas Hose, 12-1/2' (40V77)

### Water-Cooled Quick Connect Kit for QCS — QHK-1

- 2 Water Hose Extensions, 12-1/2' (40V76)
- 1 Gas Hose Extension, 12-1/2' (40V77)
- 2 Water Hose Couplers (11N18)
- 1 Gas Hose Coupler (11N17)
- 2 Quick Release Couplers — Water (QRW)
- 1 Quick Release Coupler — Gas (QRG)

## EXTENSION KITS

Contains couplers, insulators, hoses and cables required to extend torch length. Maximum torch capacities must be reduced approximately 25% because of the added length of power cable and reduced cooling efficiency.

### EK-1-25 25 ft. Extension Kit

#### Water-Cooled Torches (WP-18, 18P, 18V, 20, 20P, 24W, 25)

- 25' Extension Power Cable (40V78L)
- 25' Extension Water Hose (40V76L)
- 25' Extension Gas Hose (40V77L)

- Power Cable Coupler (11N19) and Insulator Sleeve (11N19IS)
- Water Hose Coupler (11N18)
- Gas Hose Coupler (11N17)

### EK-2-25-R 25 ft. Extension Kit

#### Air-Cooled Torches (WP-9, 9P, 9V, 17, 17V) one-piece power cables.

57Y03R 25' Power Cable, 430A Coupler and 430AIS Insulator Sleeve

## SPOT WELD KIT

### SWK-1

- 1 Flat Locator (SW-186)
- 1 Inside Corner Locator (SW-185)
- 1 Outside Corner Locator (SW-182)

- 1 Ceramic Insulator (SW-180)
- 1 Push Knob (SW-181)

The spot weld kit can be used on Weldcraft models: WP-17, WP-17V, WP-18, WP-18V, WP-26 and WP-26V torches or equivalent other brands. The standard collets and collet bodies are also used.

A spot weld timer is required on the welding machine to control the spot weld cycle time.

DISTRIBUTED BY:

**WELD** The TIG Welder's Choice  
**CRAFT**

### WELDCRAFT

119 East Graham Place  
Burbank, CA 91502  
USA

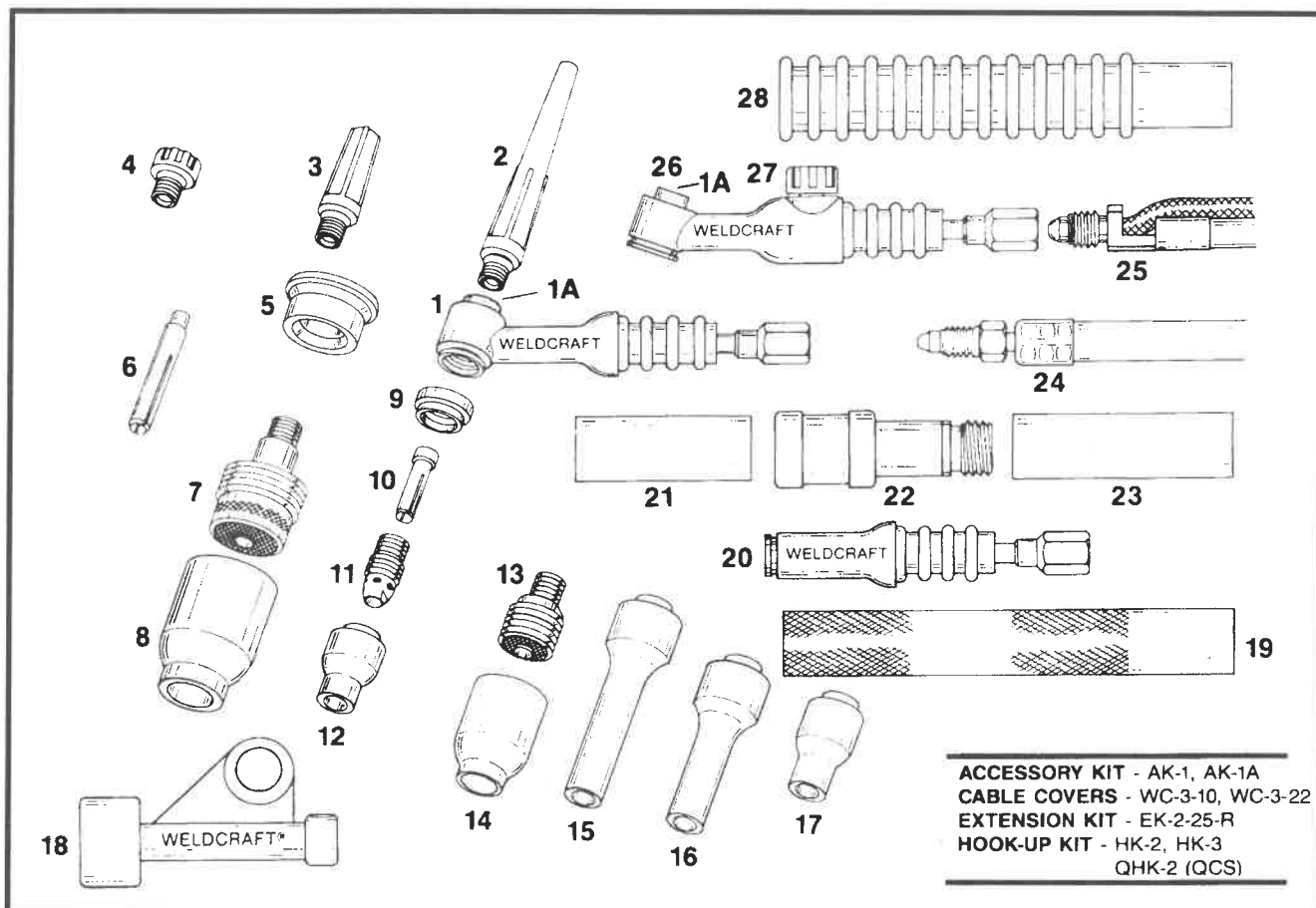
Phone: 1.818.846.8181

Toll-free: 1.800.752.7620 (USA only)

Fax: 1.818.845.1542

E-mail: customerservice@weldcraft.com

**Weldcraft.com**



ITEM NO.	STOCK NO.	DESCRIPTION	ITEM NO.	STOCK NO.	DESCRIPTION
1	WP-9	Torch body, includes cup gasket (70°)	21	V-92-1	Front handle
1A	9-4	Insert	22	V-92-2	Valve body
2	41V24	Long back cap, includes 98W77 O-ring	23	V-92-3	Rear handle
3	41V35	Medium back cap, includes 98W77 O-ring	} Not sold separately		
4	41V33	Short back cap, includes 98W77 O-ring			
5	54N63-20	Lg. diameter gas lens insulator	24	—	Valve assy. Includes items 21, 22, 23
6	—	Lg. diameter gas lens collet (See chart A)	} Power cable — 1 piece		
7	—	Lg. Diameter gas lens (See chart A)			57Y01 12 1/2 ft. (3.8m) vinyl
8	—	Lg. Diameter gas lens nozzle (See chart B)	} 57Y03 25 ft. (7.6m) vinyl		
9	598882	Cup gasket			57Y01R 12 1/2 ft. (3.8m) rubber
10	—	Collet (See chart A)	} 57Y03R 25 ft. (7.6m) rubber		
11	—	Collet body (See chart A)			57Y01-2 12 1/2 ft. (3.8m) 45V09R
12	—	Alumina nozzle (See chart B)	} 57Y03-2 25 ft. (7.6m) 45V10R		
13	—	Gas lens (See chart A)			
14	—	Alumina gas lens nozzle (See chart B)	25	—	Power cable — 2 piece Gas hose only
15	—	Extra long lava nozzle (See chart B)	} 57Y01-2 12 1/2 ft. (3.8m) 45V09R		
16	—	Long lava nozzle (See chart B)			57Y03-2 25 ft. (7.6m) 45V10R
17	—	Lava nozzle (See chart B)	26	WP-9V	Valve torch body, includes cup gasket and valve stem (70°)
18	105Z57	Power cable adapter	27	VS-2	Valve stem, includes 98W77 O-ring
19	H-100	Handle (smooth, standard on WP-9P)	28	H-100R	* Handle (ribbed, standard on WP-9V, 9)
20	WP-9P	Pencil torch body, includes cup gasket (180°)	} Cable Repair Kits		
					One-piece power cable repair kit
			ZCRK17		Two-piece power cable repair kit
			ZCRK17-2		

CHART A • COLLETS • COLLET BODIES • GAS LENS

Electrode Diameter	.020 (.5mm)	.040 (1mm)	1/16 (1.6mm)	3/32 (2.4mm)
Collet	13N20	13N21	13N22	13N23
Collet Body	13N25	13N26	13N27	13N28
Gas Lens	45V41	45V42	45V43	45V44
Lg. Dia. Gas Lens Collet	13N20L	13N21L	13N22L	13N23L
Lg. Dia. Gas Lens	45V0204S		45V116S	45V64S

CHART B • GAS NOZZLES • HPN - HIGH PERFORMANCE NOZZLES AVAILABLE

SIZE	3	4	5	6	7	8	10	12	SHORT
Alumina	—	13N08	13N09	13N10	13N11	13N12	13N13	—	—
Alumina Gas Lens	—	53N58	53N59	53N60	53N61	53N61S	—	—	—
Lg. Dia. Gas Lens	—	—	—	57N75	—	57N74	53N88	53N87	53N89*
Lava	—	13N14	13N15	13N16	13N17	13N18	13N19	—	—
Long** Lava	796F70	796F71	796F72	796F73	—	—	—	—	—
Ex. Long Lava	796F71	796F75	796F76	796F77	—	—	—	—	—

\*Not recommended for use with high frequency current.

\*\*Also available in Alumina. Example: A796F70.



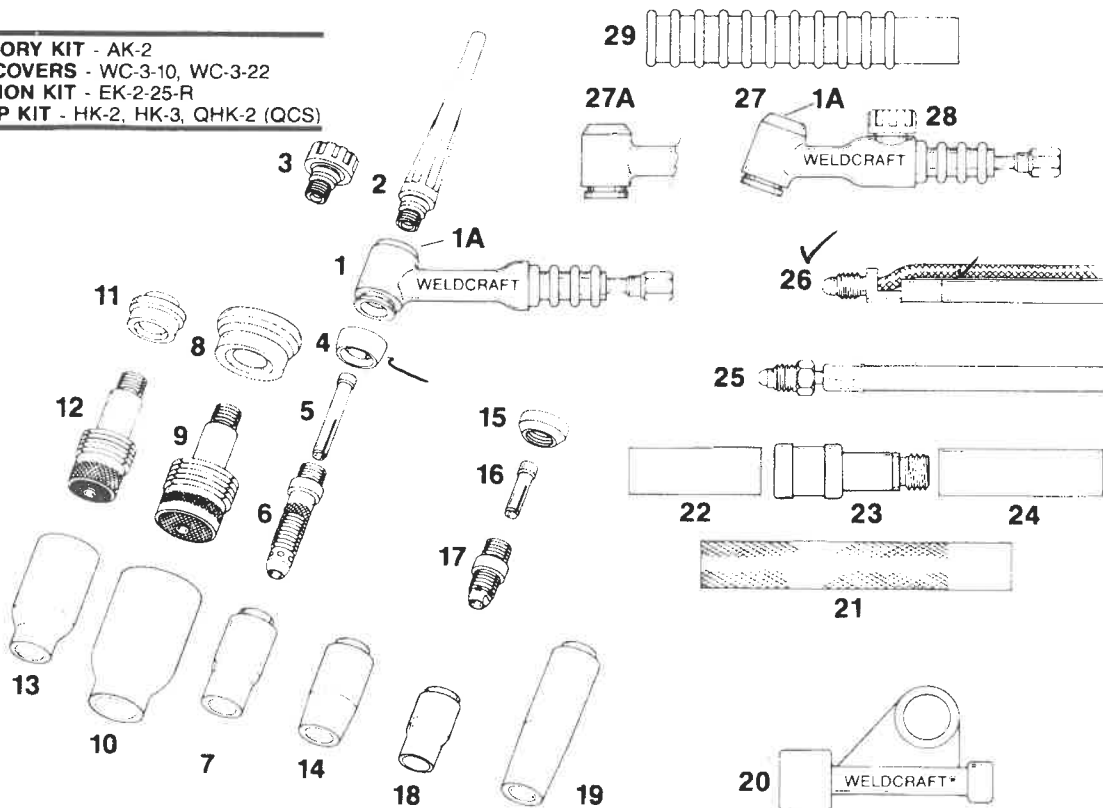
# WELDCRAFT®

## WP-17, 17V

150 AMPS • AIR COOLED

## REPLACEMENT PARTS

**ACCESSORY KIT - AK-2**  
**CABLE COVERS - WC-3-10, WC-3-22**  
**EXTENSION KIT - EK-2-25-R**  
**HOOK-UP KIT - HK-2, HK-3, QHK-2 (QCS)**



ITEM NO.	STOCK NO.	DESCRIPTION	ITEM NO.	STOCK NO.	DESCRIPTION
1	WP-17	Torch body, includes cup gasket (70°)	21	H-100	Handle (smooth, optional)
1A	18-7	Insert	22	V-92-1	Front handle
2	57Y02	Long back cap, includes 98W18 O-ring	23	V-92-2	Valve body
3	57Y04	Short back cap, includes 98W18 O-ring	24	V-92-3	Rear handle
4	18CG	Cup gasket		V-92	Valve assy. Includes items 22, 23, 24
5	—	Collet (See chart A)	25	—	Power cable — 1 piece
6	—	Collet body (See chart A)			57Y01 12½ ft. (3.8m) vinyl
7	—	Alumina nozzle (See chart B)			57Y03 25 ft. (7.6m) vinyl
8	54N63	Large diameter gas lens insulator			57Y01R 12½ ft. (3.8m) rubber
9	—	Large diameter gas lens (see chart A)			57Y03R 25 ft. (7.6m) rubber
10	—	Lg. Diameter gas lens nozzle (See chart B)	26	—	Power cable — 2 piece
11	54N01	Gas lens insulator			57Y01-2 12½ ft. (3.8m) 45V09R
12	—	Gas lens (See chart A)			57Y03-2 25 ft. (7.6m) 45V10R
13	—	Alumina gas lens nozzle (See chart B)	27	WP-17V	Torch body, includes cup gasket and valve stem (70°)
14	—	Lava nozzle (See chart B)	27A	WP-17VN	Torch body, same as WP-17V, with 90° head
15	18CG20	Stubby gasket	28	VS-2	Valve stem, includes 98W77 O-ring
16	—	Stubby collet (See chart A)	29	H-100R	Handle (ribbed, standard)
17	17CB20	Stubby collet body (See chart A)			<b>Cable Repair Kits</b>
18	—	Stubby alumina nozzle (See chart B)			One-piece power cable repair kit
19	—	Long lava nozzle (See chart B)			Two-piece power cable repair kit
20	105Z57	Power cable adapter			

**CHART A COLLETS COLLET BODIES GAS LENS**

Electrode Diameter	.020 (.5mm)	.040 (1mm)	1/16 (1.6mm)	3/32 (2.4mm)
Collet	10N21	10N22	10N23	10N24
Collet Body	10N29	10N30	10N31	10N32
Gas Lens	45V29	45V24	45V25	45V26
Lg. Dia. Gas Lens	45V0204	45V116	45V64	
Stubby Collet	—	10N22S	10N23S	10N24S
Stubby Collet Body	—		17CB20	

**CHART B GAS NOZZLES HPN - HIGH PERFORMANCE NOZZLES AVAILABLE**

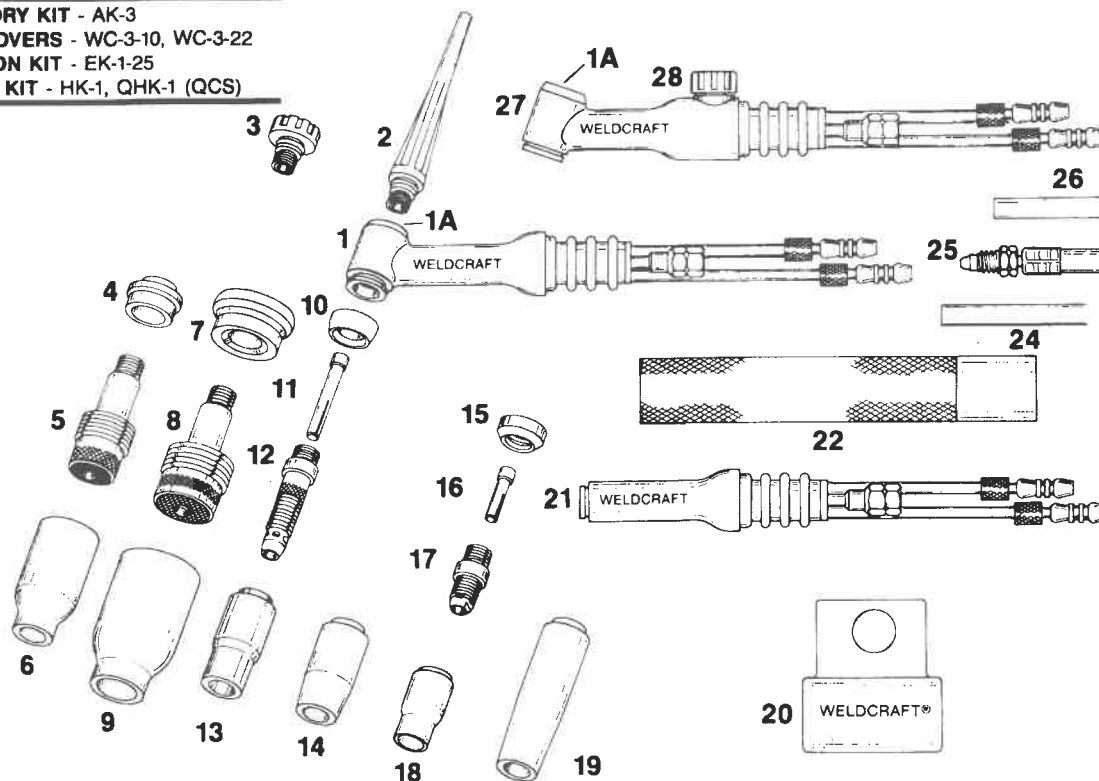
SIZE	4	5	6	7	8	10	12	SHORT
Alumina	10N50	10N49	10N48	10N47	10N46	10N45	10N44	—
Alumina Gas Lens	54N18	54N17	54N16	54N15	54N14	—	—	54N19*
Lg. Dia. Gas Lens	—	—	57N75	—	57N74	53N88	53N87	53N89.
Long Alumina	—	10N49L	10N48L	10N47L	—	—	—	—
Long Gas Lens	—	54N17L	54N16L	54N15L	—	—	—	—
Lava	105Z43	105Z42	105Z44	105Z45	08N78	08N79	08N80	—
Long Lava	12N03	105Z60	12N02	105Z61	—	—	—	—
Stubby Alumina	13N08	13N09	13N10	13N11	13N12	13N13	—	—

\*Not recommended for use with high frequency current.

# WELDCRAFT®

## WP-18, 18V, 18SP 350 AMPS • WATER COOLED REPLACEMENT PARTS

**ACCESSORY KIT - AK-3**  
**CABLE COVERS - WC-3-10, WC-3-22**  
**EXTENSION KIT - EK-1-25**  
**HOOK-UP KIT - HK-1, QHK-1 (QCS)**



ITEM NO.	STOCK NO.	DESCRIPTION	ITEM NO.	STOCK NO.	DESCRIPTION
1	WP-18	Torch body, includes cup gasket (70°)	20	45V11	Power cable adapter
1A	18-7	Insert	21	WP-18SP	Pencil torch body, includes cup gasket
2	57Y02	Long back cap, includes 98W18 O-ring	22	H-200	Handle (smooth, standard on WP-18, 18SP)
3	57Y04	Short back cap, includes 98W18 O-ring			
4	54N01	Gas lens insulator	24	—	Water Hose
5	—	Gas lens (See chart A)			40V74 12½ ft. (3.8m), 40V74R
6	—	Alumina gas lens nozzle (See chart B)			41V32 25 ft. (7.6m), 41V32R
7	54N63	Large diameter gas lens insulator	25	—	Power cable
8	—	Large diameter gas lens (see chart A)			40V64 12½ ft. (3.8m), 40V64R
9	—	Lg. Diameter gas lens nozzle (See chart B)			41V29 25 ft. (7.6m), 41V29R
10	18CG	Cup gasket	26	—	Gas Hose
11	—	Collet (See chart A)			40V75 12½ ft. (3.8m), 40V75R18
12	—	Collet body (See chart A)			41V30 25 ft. (7.6m), 41V30R18
13	—	Alumina nozzle (See chart B)	27	WP-18V	Valve torch body, includes cup gasket and valve stem (70°)
14	—	Lava nozzle (See chart B)	28	VS-2	Valve stem, includes 98W77 O-ring
15	18CG20	Stubby gasket			<b>Cable Repair Kits</b>
16	—	Stubby collet (See chart A)			ZCRK18 Power cable repair kit
17	17CB20	Stubby collet body (See chart A)			ZHRKG18 Gas hose repair kit
18	—	Stubby alumina nozzle (See chart B)			ZHRKW18 Water hose repair kit
19	—	Long lava nozzle (See chart B)			

**CHART A • COLLETS • COLLET BODIES • GAS LENS**

Electrode Diameter	.020 (.5mm)	.040 (1mm)	1/16 (1.6mm)	3/32 (2.4mm)	1/8 (3.2mm)	5/32 (4.0mm)
Collet	10N21	10N22	10N23	10N24	10N25	54N20
Collet Body	10N29	10N30	10N31	10N32	10N28	406488
Gas Lens	45V29	45V24	45V25	45V26	45V27	45V28
Lg. Dia. Gas Lens	45V0204	45V116	45V64	995795	45V63	
Stubby Collet	—	10N22S	10N23S	10N24S	10N25S	—
Stubby Collet Body	—		17CB20			—

**CHART B • GAS NOZZLES • HPN - HIGH PERFORMANCE NOZZLES AVAILABLE**

SIZE	4	5	6	7	8	10	12	SHORT
Alumina	10N50	10N49	10N48	10N47	10N46	10N45	10N44	—
Alumina Gas Lens	54N18	54N17	54N16	54N15	54N14	—	—	54N19*
Lg. Dia. Gas Lens	—	—	57N75	—	57N74	53N88	53N87	53N89*
Long Alumina	—	10N49L	10N48L	10N47L	—	—	—	—
Long Gas Lens	—	54N17L	54N16L	54N15L	—	—	—	—
Lava	105Z43	105Z42	105Z44	105Z45	08N78	08N79	08N80	—
Long Lava	12N03	105Z60	12N02	105Z61	—	—	—	—
Stubby Alumina	13N08	13N09	13N10	13N11	13N12	13N13	—	—

\*Not recommended for use with high frequency current.

Water cooled torches require cooling water flow of 1 quart (.94 liter) to 1½ quarts (1.4 liters) per minute at a maximum of 50 PSI pressure.

**WELDCRAFT PRODUCTS, INC. • Burbank, CA 91502, USA • (800) 752-7620 • FAX (818) 845-1542**

# WELDCRAFT®

**WP-20**

250 AMPS • WATER COOLED

**WP-20P**

225 AMPS • WATER COOLED

**WP-25**

200 AMPS • WATER COOLED

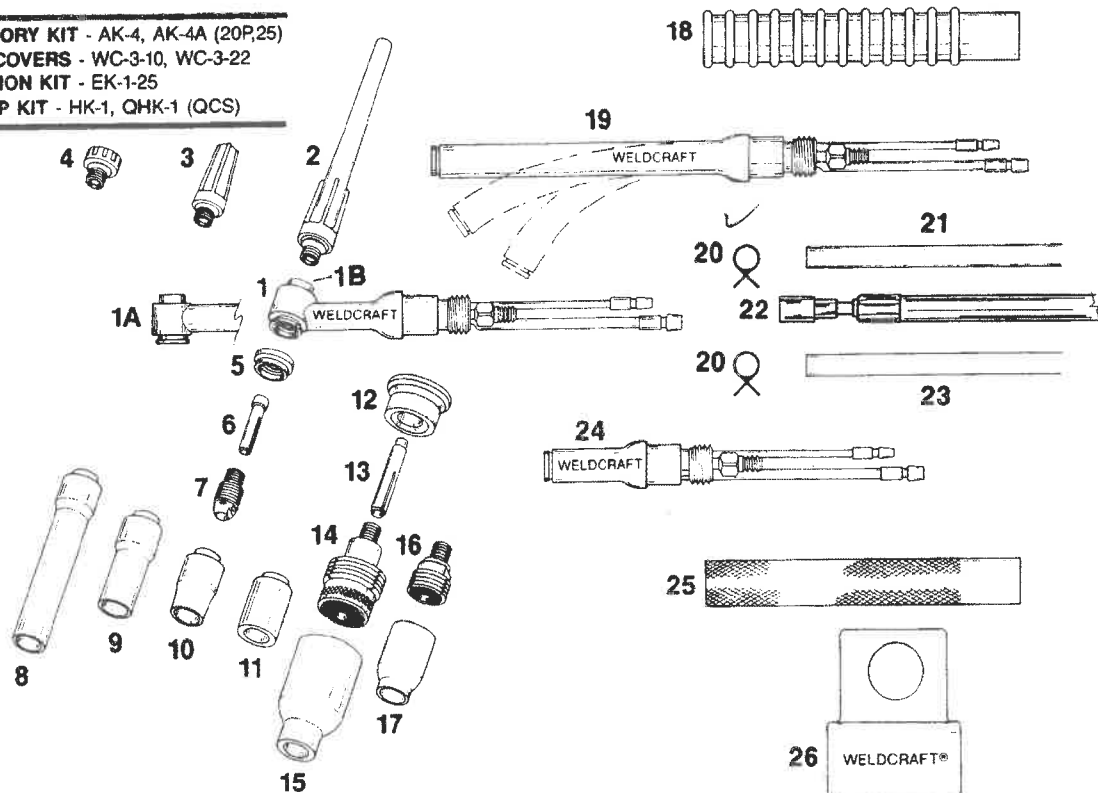
**REPLACEMENT PARTS**

**ACCESSORY KIT - AK-4, AK-4A (20P,25)**

**CABLE COVERS - WC-3-10, WC-3-22**

**EXTENSION KIT - EK-1-25**

**HOOK-UP KIT - HK-1, QHK-1 (QCS)**



ITEM NO.	STOCK NO.	DESCRIPTION	ITEM NO.	STOCK NO.	DESCRIPTION
1	WP-20	Torch body, includes cup gasket (70°)	19	WP-25	Flexible torch body, includes cup gasket
1A	WP-20N	Torch body, same as WP-20, with 90° head	20	53N04	Hose clamp
1B	9-4	Insert	21	—	Gas hose
2	41V24	Long back cap, includes 98W77 O-ring			45V09 12½ ft. (3.8m), 45V09R
3	41V35	Medium back cap, includes 98W77 O-ring			45V10 25 ft. (7.6m), 45V10R
4	41V33	Short back cap, includes 98W77 O-ring	22	—	Power Cable
5	598882	Cup gasket			45V03 12½ ft. (3.8m), 45V03R, 45V03HD
6	—	Collet (See chart A)			45V04 25 ft. (7.6m), 45V04R, 45V04HD
7	—	Collet body (See chart A)	23	—	Water hose
8	—	Extra long lava nozzle (See chart B)			45V07 12½ ft. (3.8m), 45V07R, 45V07HD
9	—	Long lava nozzle (See chart B)			45V08 25 ft. (7.6m), 45V08R, 45V08HD
10	—	Alumina nozzle (See chart B)	24	WP-20P	Pencil torch body, includes cup gasket
11	—	Lava nozzle (See chart B)	25	53N06	Handle (smooth, standard)
12	54N63-20	Lg. Diameter gas lens insulator	26	45V11	Power cable adapter
13	—	Lg. Diameter gas lens collet (See chart A)			<b>Cable repair kits</b>
14	—	Lg. Diameter gas lens (See chart A)			ZCRK20 Power cable repair kit
15	—	Lg. Diameter gas lens nozzle (See chart B)			ZHRKG20 Gas hose repair kit
16	—	Gas lens (See chart A)			ZHRKW20 Water hose repair kit
17	—	Alumina gas lens nozzle (See chart B)			
18	53N06R	Handle (ribbed, optional)			

**CHART A • COLLETS • COLLET BODIES • GAS LENS**

Electrode Diameter	.020 (.5mm)	.040 (1mm)	1/16 (1.6mm)	3/32 (2.4mm)	1/8 (3.2mm)
Collet	13N20	13N21	13N22	13N23	13N24
Collet Body	13N25	13N26	13N27	13N28	13N29
Gas Lens	45V41	45V42	45V43	45V44	45V45
Lg. Dia. Gas Lens Collet	13N20L	13N21L	13N22L	13N23L	13N24L
Lg. Dia. Gas Lens	45V0204S	45V116S	45V64S	995795S	

**CHART B • GAS NOZZLES • HPN - HIGH PERFORMANCE NOZZLES AVAILABLE**

SIZE	3	4	5	6	7	8	10	12	SHORT
Alumina	—	13N08	13N09	13N10	13N11	13N12	13N13	—	—
Alumina Gas Lens	—	53N58	53N59	53N60	53N61	63N61S	—	—	—
Lg. Dia. Gas Lens	—	—	—	57N75	—	57N74	53N88	53N87	53N89*
Lava	—	13N14	13N15	13N16	13N17	13N18	13N19	—	—
Long** Lava	796F70	796F71	796F72	796F73	—	—	—	—	—
Ex. Long Lava	796F74	796F75	796F76	796F77	—	—	—	—	—

Water cooled torches require cooling water flow of 1 quart (.94 liter) to 1½ quarts (1.4 liters) per minute at a maximum of 50 PSI pressure.

\*Not recommended for use with high frequency current.

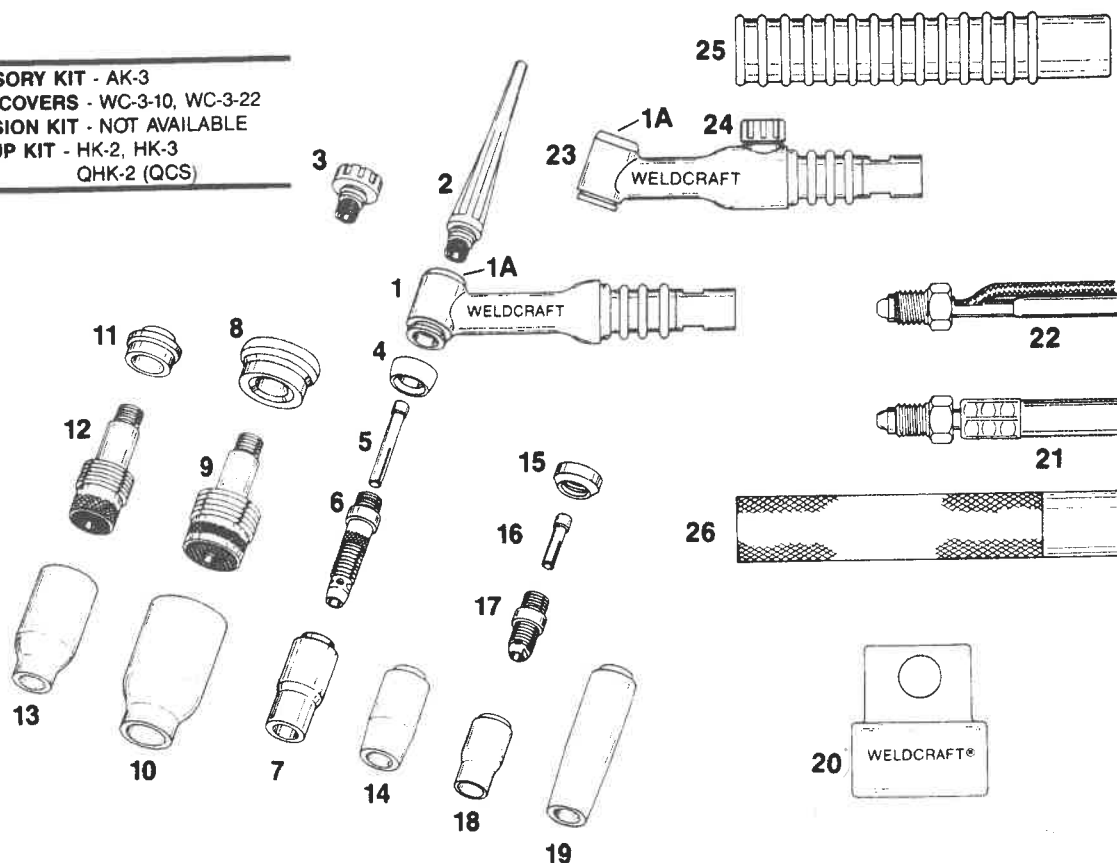
\*\*Also available in Alumina. Example: A796F70.

WELDCRAFT PRODUCTS, INC. • Burbank, CA 91502, USA • (800) 752-7620 • FAX (818) 845-1542

COPYRIGHT 1983 WELDCRAFT PRODUCTS, INC.

W-007 R-01

**ACCESSORY KIT - AK-3**  
**CABLE COVERS - WC-3-10, WC-3-22**  
**EXTENSION KIT - NOT AVAILABLE**  
**HOOK-UP KIT - HK-2, HK-3**  
**QHK-2 (QCS)**



ITEM NO.	STOCK NO.	DESCRIPTION	ITEM NO.	STOCK NO.	DESCRIPTION
1	WP-26	Torch body, includes cup gasket (70°)	18	—	Stubby alumina nozzle (See chart B)
1A	18-7	Insert	19	—	Long lava nozzle (See chart B)
2	57Y02	Long back cap, includes 98W18 O-ring	20	45V62	Power cable adapter
3	57Y04	Short back cap, includes 98W18 O-ring	21	—	Power cable - 1 piece rubber
4	18CG	Cup gasket			46V28R 12½ ft. (3.8m)
5	—	Collet (See chart A)			46V30R 25 ft. (7.6m)
6	—	Collet body (See chart A)	22	—	Power cable - 2 piece <b>Gas hose only</b>
7	—	Alumina nozzle (See chart B)			46V28-2 12½ ft. (3.8m) 40V75R
8	54N63	Lg. Diameter gas lens insulator			46V30-2 25 ft. (7.6m) 41V30R
9	—	Lg. Diameter gas lens (See chart A)	23	WP-26V	Valve torch body, includes cup gasket and valve stem (70°)
10	—	Lg. Diameter gas lens nozzle (See chart B)	24	VS-1	Valve stem, includes 98W77 O-ring
11	54N01	Gas lens insulator	25	H-200R	Handle (ribbed, standard)
12	—	Gas lens (See chart A)	26	H-200	Handle (smooth, optional)
13	—	Alumina gas lens nozzle (See chart B)			<b>Cable Repair Kits</b>
14	—	Lava nozzle (See chart B)			ZCRK26 One-piece power cable repair kit
15	18CG20	Stubby gasket			ZCRK26-2 Two-piece power cable repair kit
16	—	Stubby collet (See chart A)			
17	—	Stubby collet body (See chart A)			

**CHART A • COLLETS • COLLET BODIES • GAS LENS**

Electrode Diameter	.020 (.5mm)	.040 (1.0mm)	1/16 (1.6mm)	3/32 (2.4mm)	1/8 (3.2mm)	5/32 (4.0mm)
Collet	10N21	10N22	10N23	10N24	10N25	54N20
Collet Body	10N29	10N30	10N31	10N32	10N28	406488
Gas Lens	45V29	45V24	45V25	45V26	45V27	45V28
Lg. Dia. Gas Lens	45V0204	45V116	45V64	995795	45V63	
Stubby Collet	—	10N22S	10N23S	10N24S	10N25S	—
Stubby Collet Body	—		17CB20			—

**CHART B • GAS NOZZLES • HPN - HIGH PERFORMANCE NOZZLES AVAILABLE**

SIZE	4	5	6	7	8	10	12	SHORT
Alumina	10N50	10N49	10N48	10N47	10N46	10N45	10N44	—
Alumina Gas Lens	54N18	54N17	54N16	54N15	54N14	—	—	54N19*
Lg. Dia. Gas Lens	—	—	57N75	—	57N74	53N88	53N87	53N89*
Long Alumina	—	10N49L	10N48L	10N47L	—	—	—	—
Long Gas Lens	—	54N17L	54N16L	54N15L	—	—	—	—
Lava	105Z43	105Z42	105Z44	105Z45	08N78	08N79	08N80	—
Long Lava	12N03	105Z60	12N02	105Z61	—	—	—	—
Stubby Alumina	13N08	13N09	13N10	13N11	13N12	13N13	—	—

\*Not recommended for use with high frequency current.